

**ALASKA DIVISION OF HOMELAND SECURITY &  
EMERGENCY MANAGEMENT**  
**SITUATION REPORT 24-059 • February 28, 2024**



Toll-Free 1.800.478.2337

Anchorage Area 907.428.7000

SEOC 907.428.7100

|  |   |   |
|--|---|---|
| <p><b><u>SEOC Preparedness Level</u></b><br/><br/>Level 1 – Routine Operations.</p>              | <p align="center"><a href="http://ready.alaska.gov">http://ready.alaska.gov</a></p>                 | <p><b><u>National Terrorism Advisory System:</u></b><br/><br/><a href="#">Read the NTAS Bulletin here</a></p> |
| <p><a href="#">Maritime Security (MARSEC)</a> Level:1- Minimum Appropriate Security Measures</p> | <p><b>WHO Novel Coronavirus Pandemic (COVID-19):</b><br/><a href="#">2019 Novel Coronavirus</a></p> | <p><b><u>Alaska Military Installation Force Protection Level:</u></b> FPCON Bravo</p>                         |

(Significant changes from previous situation reports are red.)

**Significant Issues:**

**Kotzebue – Frozen Water Lines**

SEOC continues to support and monitor the interagency response and recovery for this event.

**Quinhagak Power Outage Disaster**

The State Individual Assistance application hotline and website are open for Quinhagak residents at <https://www.ready.alaska.gov/Recovery/IA> or by phone at 1 (844) 445-7131. The deadline to apply for State Individual Assistance is March 2, 2024.

**State of Alaska Department of Health (DOH)**

The DOH stands ready to assist with all aspects of public health and, in the event of a public health emergency, is supported by the SEOC and other state departments as required.

For current information, see: <https://health.alaska.gov/dph/Pages/default.aspx>  
<https://health.alaska.gov/dph/Emergency/Pages/prepared/default.aspx>

**NTAS Bulletin**

The U.S. Department of Homeland Security issued an updated National Terrorism Advisory Bulletin on May 24, 2023. The current and expired bulletins can be viewed at the below link.

<https://www.dhs.gov/national-terrorism-advisory-system>

**Travel Alerts and Conditions**

For current driving conditions, dial 511 or visit: <https://511.alaska.gov/>

**Barry Arm Landslide / Tsunami Risk**

For the latest information on the Barry Arm Landslide and Tsunami risk, click here:

<https://dggs.alaska.gov/hazards/barry-arm-landslide.html>

## Earthquakes

United States Geological Service (USGS) Earthquake Information: <http://earthquake.usgs.gov/>  
National Tsunami Warning Center: <http://tsunami.gov/>

## Alaska Volcanoes

**Great Sitkin** Alert Level: **Watch** and Aviation Color Code: **Orange**  
**Kanaga** Alert Level **Advisory** and Aviation Color Code: **Yellow**  
**Shishaldin** Alert Level: **Watch** and Aviation Color Code: **Yellow**  
**Gareloi** Alert Level: **Advisory** and Aviation Color: **Yellow**

For Alaska Volcano updates, go to: <https://www.avo.alaska.edu/>

## Air Quality Index (AQI) Advisories

For the most up-to-date Air Quality Index Advisories:  
<http://dec.alaska.gov/Applications/Air/airtoolsweb/Home/Index>

## Spills of Oil and Hazardous Substances

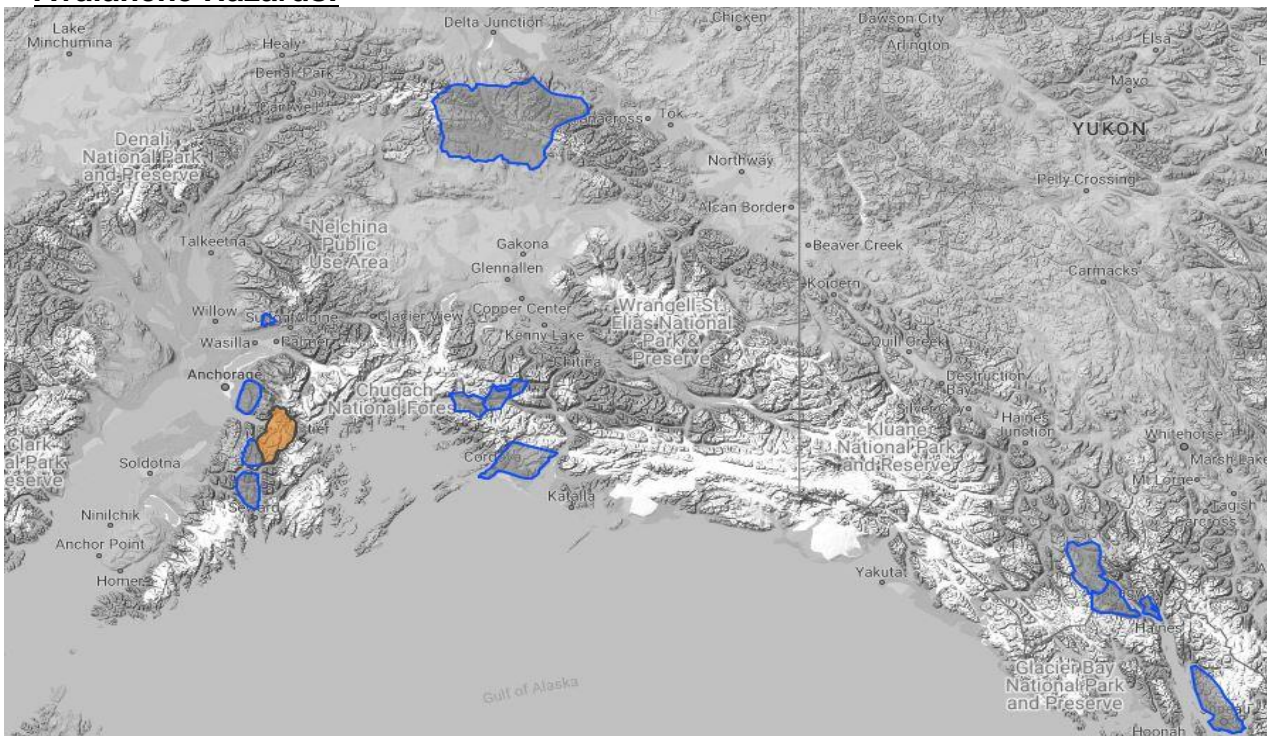
The Alaska Division of Environmental Conservation (ADEC) Spill Prevention and Response page is located at:  
<https://dec.alaska.gov/spar/>

## Alaska Cyber Security Information

State Employees may sign up for cybersecurity notifications and alerts at  
<https://oit.alaska.gov/security>

Cybersecurity and Infrastructure Security Agency (CISA)-Cybersecurity Services and Tools:  
[www.cisa.gov/free-cybersecurity-services-and-tools](http://www.cisa.gov/free-cybersecurity-services-and-tools)

## Avalanche Hazards:

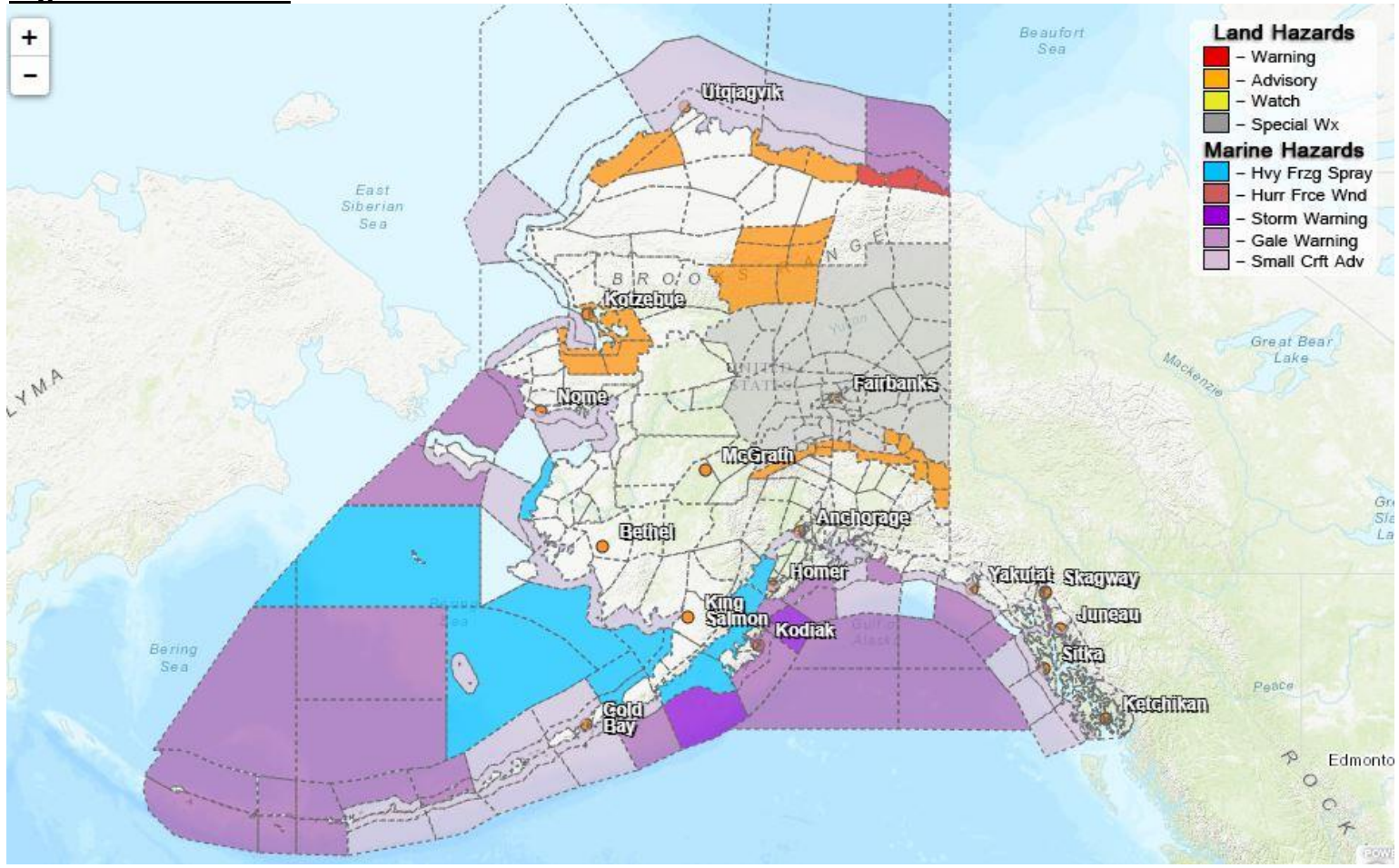


Travel in avalanche terrain is not recommended. Avoid being on or beneath all steep slopes.

**Turnagain Pass** –CONSIDERABLE above 2,500ft, Moderate 1,000 – 2500 ft, Low below 1,000ft.

For more information and the most current avalanche conditions, go to <https://alaskasnow.org>

### Significant Weather:



#### **Winter Storm Warning**

- **Eastern Beaufort Sea Coast**- In effect until 4am Friday.

#### **Winter Weather Advisory**

- **Eastern Alaska Range South of Trims Camp** – Until 10am Friday.
- **Northern Seward Peninsula** - Until 6am Thursday.
- **Central Beaufort Sea Coast** – Until 3am Friday.

#### **Wind Chill Advisory**

- **Shishmaref; Bering Strait Coast** – Until 3 PM Tuesday.
- **Upper Tanana Valley** – Until noon today.
- **Central Brooks Range Lower Kobuk Valley; Baldwin Peninsula; Northern Seward Peninsula; Central Brooks Range** - Until 9am Thursday.
- **Southern Denali Borough; Eastern Alaska Range South of Trims Camp** – Until 10am Friday
- **Central Beaufort Sea Coast** – Until 3am Friday.
- **Northwest Arctic Coast** – Until 9pm Tuesday.



## Special Weather Statement

- **South Slopes Of The Eastern Brooks Range; South Slopes Of The Central Brooks Range; Upper Koyukuk Valley; Dalton Highway Summits; Yukon Flats; White Mountains and High Terrain South of the Yukon River; Fortymile Country; Upper Tanana Valley; Delta Junction; Upper Chena River Valley; Tanana Flats; Eielson AFB and Salcha; Goldstream Valley and Nenana Hills; Chatanika River Valley; Two Rivers; Fairbanks Metro Area; Nenana; Central Interior; Northern Denali Borough; Southern Denali Borough; Eastern Alaska Range North of Trims Camp; Eastern Alaska Range South of Trims Camp**– Very Cold Across The Interior Through The Weekend.

For more information and the most current weather, Watches / Warnings / Advisories go to:  
<https://www.weather.gov/arh/>

**The Next Situation Report** will be **February 29, 2024**. A significant change in the situation or the threat level will prompt an interim report. This report is posted on the internet at  
<https://ready.alaska.gov/sitrep>.

To register for email distribution, go to <http://list.state.ak.us/mailman/listinfo/dhsem.situation.report>.  
Direct questions regarding this report to the SEOC at 907-428-7100 or [seoc@alaska.gov](mailto:seoc@alaska.gov).